

# PowerPoint Alchemy

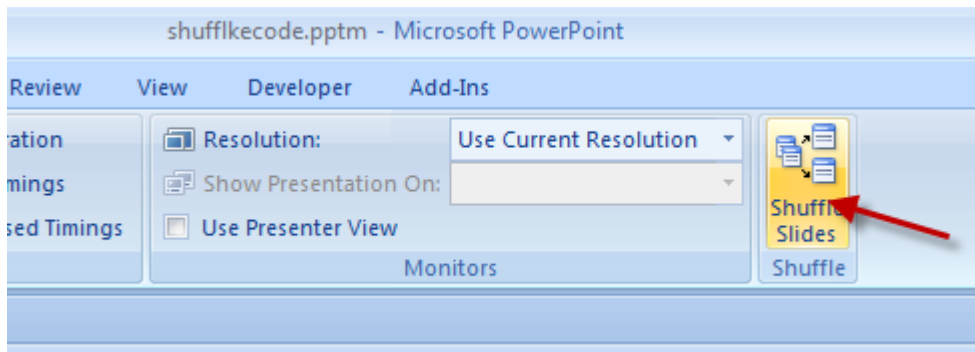
## PowerPoint Shuffle

### Install

Macro security must be set “Disable with prompt” before running the installer. If you cannot see this feature on the ribbon go to Office button > PowerPoint Options > Popular > Enable Developer Tab. If you have not previously enabled this the security setting is likely to be correct already unless your company has changed it! In 2010 this option is likely to be in File > PowerPoint Options > Customize ribbon.

**\*\*IMPORTANT\*\* Close PowerPoint before continuing**

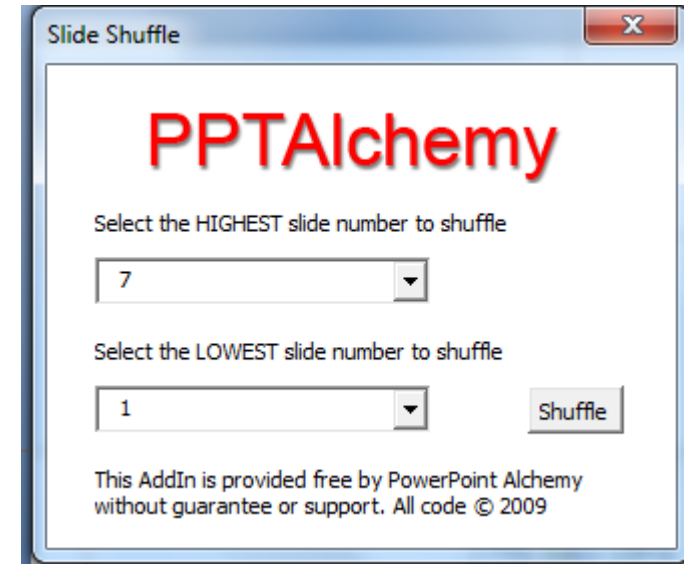
With PowerPoint CLOSED run the installer (msi) file to install the Add In. Open PowerPoint and in the Slide Show Tab you should see a new section “Shuffle”



Clicking this button runs the code.

Simply select the highest and lowest slides that you want to shuffle and click “Shuffle”

If you do not want to overwrite the original save as with a new name.



This version also works in 2002/3. In these versions a new toolbar should appear which can be docked as you wish.